



GRIN1 Polyclonal Antibody

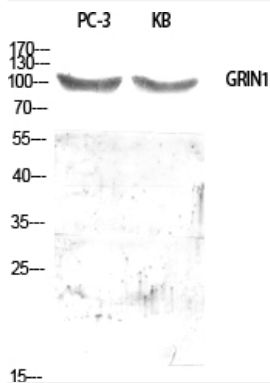
Catalog No	YP-Ab-12733
Isotype	IgG
Reactivity	Human;Rat;Mouse;
Applications	WB;ELISA
Gene Name	GPRIN1
Protein Name	G protein-regulated inducer of neurite outgrowth 1
Immunogen	The antiserum was produced against synthesized peptide derived from human GPRIN1. AA range:231-280
Specificity	GRIN1 Polyclonal Antibody detects endogenous levels of GRIN1 protein.
Formulation	Liquid in PBS containing 50% glycerol, 0.5% BSA and 0.02% sodium azide.
Source	Polyclonal, Rabbit,IgG
Purification	The antibody was affinity-purified from rabbit antiserum by affinity-chromatography using epitope-specific immunogen.
Dilution	Western Blot: 1/500 - 1/2000. ELISA: 1/40000. Not yet tested in other applications.
Concentration	1 mg/ml
Purity	≥90%
Storage Stability	-20°C/1 year
Synonyms	GPRIN1; KIAA1893; G protein-regulated inducer of neurite outgrowth 1; GRIN1
Observed Band	102kD
Cell Pathway	Cell membrane ; Lipid-anchor . Cell projection, growth cone . Highly enriched in growth cone. .
Tissue Specificity	Widely expressed in the central nervous system, with highest levels in spinal cord.
Function	function:May be involved in neurite outgrowth.,PTM:Palmitoylation on Cys-999 and/or Cys-1000 is required for membrane targeting.,subcellular location:Highly enriched in growth cone.,subunit:Interacts with activated forms of GNAI1, GNAO1 and GNAZ.,tissue specificity:Widely expressed in the central nervous system, with highest levels in spinal cord.,
Background	function:May be involved in neurite outgrowth.,PTM:Palmitoylation on Cys-999 and/or Cys-1000 is required for membrane targeting.,subcellular location:Highly enriched in growth cone.,subunit:Interacts with activated forms of GNAI1, GNAO1 and GNAZ.,tissue specificity:Widely expressed in the central nervous system, with highest levels in spinal cord.,
matters needing attention	Avoid repeated freezing and thawing!



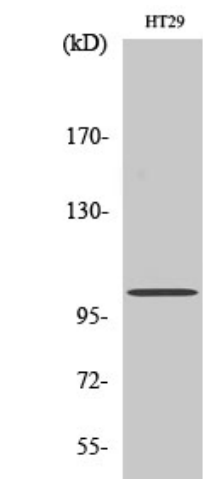
Usage suggestions

This product can be used in immunological reaction related experiments. For more information, please consult technical personnel.

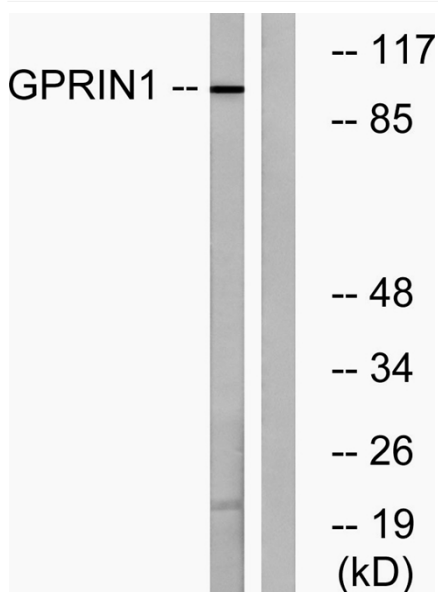
Products Images



Western Blot analysis of various cells using GRIN1 Polyclonal Antibody diluted at 1:500



Western Blot analysis of HT29 cells using GRIN1 Polyclonal Antibody diluted at 1:500



Western blot analysis of lysates from HT-29 cells, using GPRIN1 Antibody. The lane on the right is blocked with the synthesized peptide.